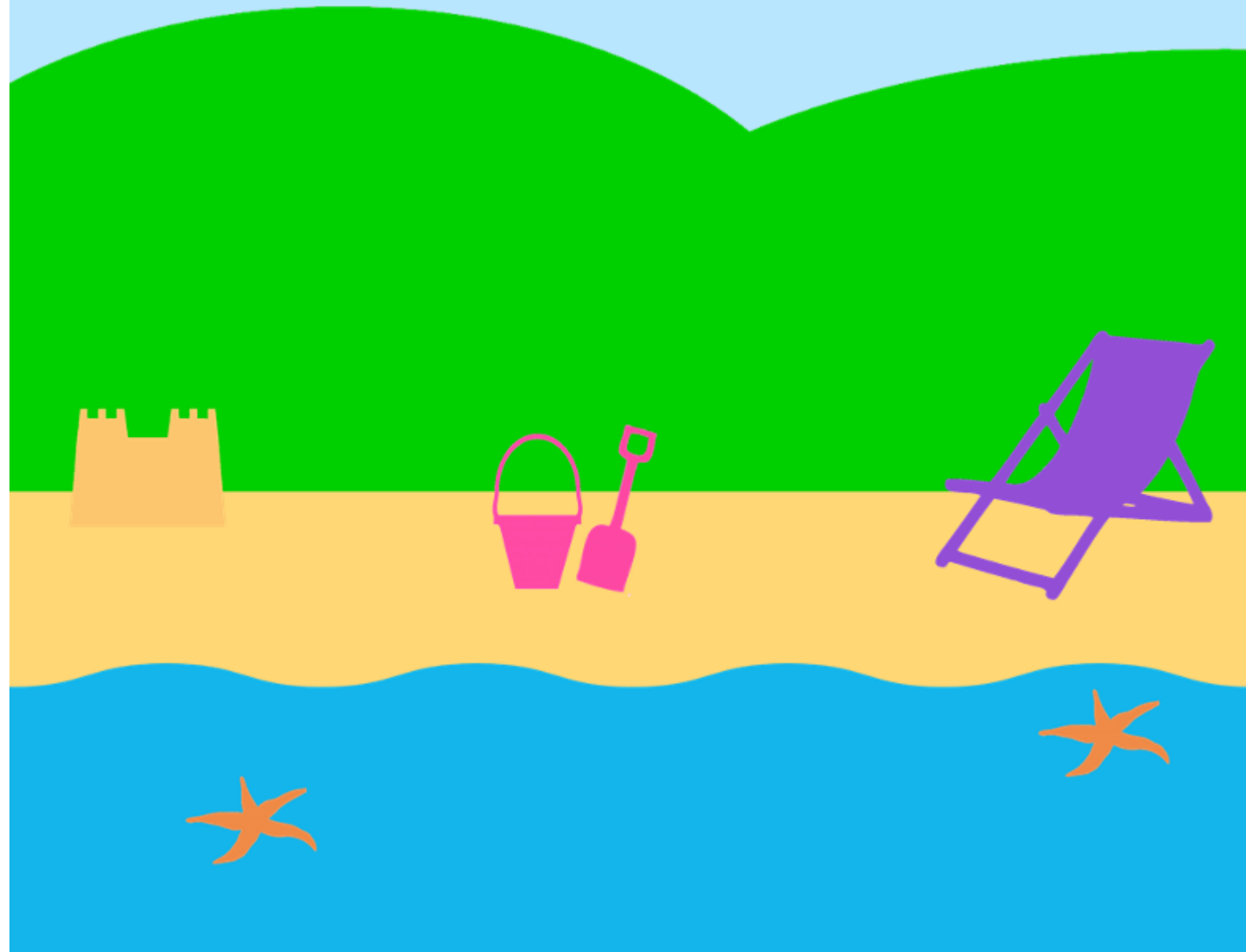


Newsletter  
July-September 2013



# In this issue:

Page 3 WorkWise and free transport

Page 4 DFTRA Open Day

Page 5 Pendants – a real life saver  
Two chances to win £100

Page 6 TRA news  
Mayor's Civic Awards

Page 8 DFTRA Update

## WorkWise Is Supporting Dudley's Unemployed With Free Transport

Centro's award winning scheme, WorkWise, is helping hundreds of unemployed people living in the Dudley borough overcome transport barriers to work until March 2014.

We will be supporting more than one thousand jobseekers in the area by providing unlimited free day tickets to job interviews and up to eight weeks worth of travel or alternatively cycling support to new jobs of 16 hours or more per week.

Our support doesn't end there - in addition, we assist WorkWise customers in planning their journey to work, helping them find the quickest and easiest routes and in turn taking the hassle out of those first few precious days commuting to a new job.

WorkWise is not only supporting the whole of Dudley, but unemployed residents living in Birmingham, Solihull, Coventry and the Black Country until 2015. We aim to help thousands of people get back into and stay in work.

Customers can receive an unlimited supply of day tickets to job interviews and up to eight weeks worth of free travel or cycling support once in a 12 month period for a new job.

WorkWise is offering eligible customers tickets that cover local travel for the bus, bus/metro or Nnetwork tickets which can be used on the bus, metro and train if you need to travel a little further to work. For customers, who are eligible for cycling support, WorkWise will be offering a combination of items which could include a free refurbished bike, cycling equipment, Dr Bike sessions, bike buddying, and the opportunity to receive cycle training.

This can be accessed through their local Jobcentre Plus by speaking to an Advisor and bringing along relevant documentation.

To be eligible for up to eight weeks worth of free ticketing or the unlimited day tickets to job interviews, clients must have council tax payable to Dudley Council.

### **To be eligible for cycling support they must live in one of the following wards:**

Amblecote, Brierley Hill, Castle & Priory, Coseley East, Gornal, Halesowen North, Quarry Bank & Dudley Wood, Sedgley, St James's, St Thomas's, Upper Gornal & Woodsetton.

Jobseekers must also...

- be unemployed prior to applying for WorkWise support
- be attending an interview or starting a job that is 16 hours or more per week
- have proof of ID and address
- provide proof of employment
- provide an existing adult travel photocard or a passport size photo
- make a complete application within 5 working days of starting a new job.
- must not be receiving travel assistance from another programme (i.e Work Programme)

WorkWise forms part of Centro's Smart Network, Smarter Choices initiative, launched after a successful bid to Government's Local Sustainable Transport Fund (LSTF).

The project aims to support economic growth and reduce carbon emissions through linking travel to employment opportunities and encouraging people to travel using more sustainable methods.

If you wish to find out more, please **contact us** on **0121 214 7431** or email **workwisedudley@centro.org.uk**

**[www.networkwestmidlands.com/workwise](http://www.networkwestmidlands.com/workwise)**

If you would like an article, a thank you or any other information included in a future edition of this newsletter, please get in touch or send it to us at [info@dftra.org.uk](mailto:info@dftra.org.uk).

If you would like to get involved with DFTRA, or would like more information please call us on 01384 868 010 or email





## DFTRA Open Day

We would like to thank all the TRA members who came to see us in the office on Tuesday 25th and Saturday 29th June. It was lovely to see all that attended and we hope that people like the changes that have been made so far. Special thanks must go to Pat and Margaret from Butterfield Court TRA who very kindly put the food together.

Our offices are open from Tuesday to Friday from 9.30am to 12.30pm, however it's always best to call beforehand, just to make sure. Check page 8 for updates on the Resource Hub and the training and other services that we will be providing.

Here are some photos from the Open Days, all photos can be found on the DFTRA website and Facebook page.





### Pendants – a real life saver

If you have one of Dudley Council's emergency pendants it is important that you keep it handy – in case of emergency.

Pendants are not just for falls, or for when you are ill. You should also think fire.

In the case of a fire in your property you should use the emergency call button as soon as possible. Notifying Dudley Council via the pendant will get a quicker response than assuming their call centre will be notified via your smoke alarms. It is better to let them know by both methods to get help there as soon as we can.

If you are interested in their Telecare assistive technology products go to [www.dudley.gov.uk](http://www.dudley.gov.uk) or telephone them on 0300 555 2345.

As a council tenant there is no additional cost for this service.

### **Fancy winning £100 in shopping vouchers?**

If yes, simply **sign up to housing service's alerts** before 4pm on 30th November 2013 and you will be entered into

**The housing alerts system notifies tenants and residents living on council estates via mobile phone or email when their next tenants and resident association meeting or forum is taking place. They will also receive other useful housing information to keep them up to date with their services.**

To sign up to the new service:

visit our **website** at [www.dudley.gov.uk/housingalerts](http://www.dudley.gov.uk/housingalerts)

ring **01384 815168**

or **text** your **name, house number** and **postcode** to **07797 870352**

(the initial text will only cost your standard rate).

The service is **free** to use.

\*terms and conditions apply - see our website for information. Existing users will automatically be entered.

### **Dudley Council Housing Tenant?**

#### **Sign up to Direct Debit and have a chance of winning £100**

By simply paying your rent via Direct Debit during July 2013 to June 2014 you will be automatically entered into our monthly free prize draw to win £100 of supermarket vouchers.

There's a 1 in 3000 chance of winning—better odds than the lottery!

Terms and conditions apply, for details visit [www.dudley.gov.uk/rents/](http://www.dudley.gov.uk/rents/)



### Wollaston Farm TRA

Dudley's Deputy Mayor, Councillor Margaret Aston, visited Wollaston Farm estate to launch the first of Wollaston Farm TRA's big clean ups.

The TRA successfully applied for funding from the Big Lottery Fund to hold the community led event. The group were supported by volunteers from the Big Clean Up Group Netherton, Dudley Council Officers, local Councillors and PCSOs.

The volunteers arranged skips for tenants and residents to dispose of rubbish and unwanted items stored in homes and gardens. They also provided a collection service on the day for people with large bulky items and arranged for fly tipped rubbish to be dealt with.

The event was a great success and the tenants and residents association are planning to do it all again for the top of the estate later in the year.

### Holly Hall & Woodside TRA

We would like to say thank you to our outgoing committee members for all their hard work and a big welcome to new committee members who have joined us.

Following on from our AGM we will be holding an estate walkabout with our housing manager to look at priorities raised and reporting back at our general meeting in September.

Why not take the opportunity to join us on our walkabout and point out your priorities for the area or pop along to our general meeting and support your TRA.

There is a walkabout on the 9th September 2013 at 6.30pm—meet by the youth shelter on Woodside Park.

The General Meeting will be on Tuesday 10th September at 7pm—Woodside Community Centre.

### The Mayor's awards

John Mason, a dedicated volunteer who works tirelessly to improve the Darby End and Netherton area, was recently nominated for the Frank Foley Award for community spirit. John was runner-up in this category in recognition of his continued dedication to improving the local community and neighbourhood.

John is chairman of numerous committees that work to improve the areas including Darby End TRA, Netherton Regeneration Group, the Big Clean up Group and the Neighbourhood Police Group.

John has been a community activist for over 40 years and is a real inspiration to the groups he works with and the wider community.

Congratulations also to The Big Clean Up Group who won the **William Shenstone award for environment** at the Mayor's Civic Awards. They were recognised for their collection and clean-up events throughout the Netherton and St Andrews area.

The Big Clean Up Group are volunteers in partnership with Dudley Council with the aim of making the area a cleaner place to live. The group have so far obtained over £20,000 of funding and held over 25 clean ups since they began in 2008.



Colin Day attended the evening to collect the award on behalf of the group



# DFTRA Update

## Office Updates

- ☀ Following the success of the Open Days, we will be looking to have another later on in the year or early next year. If you attended the Open Day and have any feedback or suggestions please let us know.
- ☀ The computer equipment purchased via the Awards For All funding will arrive soon, and once it is all connected the Mentor training will begin, followed by the Social Media training delivery to TRA members, as well as some basic training. If you are in a TRA and are interested in using Social Media as a tool to promote your TRA, please contact Caroline at DFTRA via the details below, or Kim Avantaggiato Participation Development officer on 01384 813066 or kim.avantaggiato@dudley.gov.uk.
- ☀ The offices are open Tuesday to Friday from 9.30am for TRA members to use our facilities. This includes photocopying of any TRA documents and will soon include the use of a spare computer.
- ☀ Leaflets are still being printed, if your TRA requires leaflets please contact your PDO officer a few weeks in advance of the meeting.

## Website and Newsletter

- 💻 If you have any additions to your TRA section of the website please let us know.
- 💻 If you would like to contribute an article for the DFTRA newsletter then please send the article and any photos to caroline@dftra.org.uk.

## Partnership Meetings

- 📅 Communication Group—the text alerts are now fully up and running, and we would encourage TRA members to sign up for these as well as promote the service in your area and in General Meetings, for more information see page 6.
- 📅 The board members have continued to attend Partnership meetings with all main contractors and we are committed to raising concerns at the meetings that are brought to our attention by our members. Any major issues that are raised will be taken up with the relevant contractor with the view to a resolution. Important and necessary information will be fed back to our members in General Meetings. If you have a complaint or concern, please send it to us in writing either by post or email.



**Dudley Federation of Tenants and Residents Associations**

**The Ground Floor Complex, Booth Court  
Lower Derry Street, Brierley Hill, DY5 2SJ**

**-- Tel: 01384 868010 --**

**-- Website: [www.dftra.org.uk](http://www.dftra.org.uk) --**

**-- E-mail: [info@dftra.org.uk](mailto:info@dftra.org.uk)**

